



FALL 2022

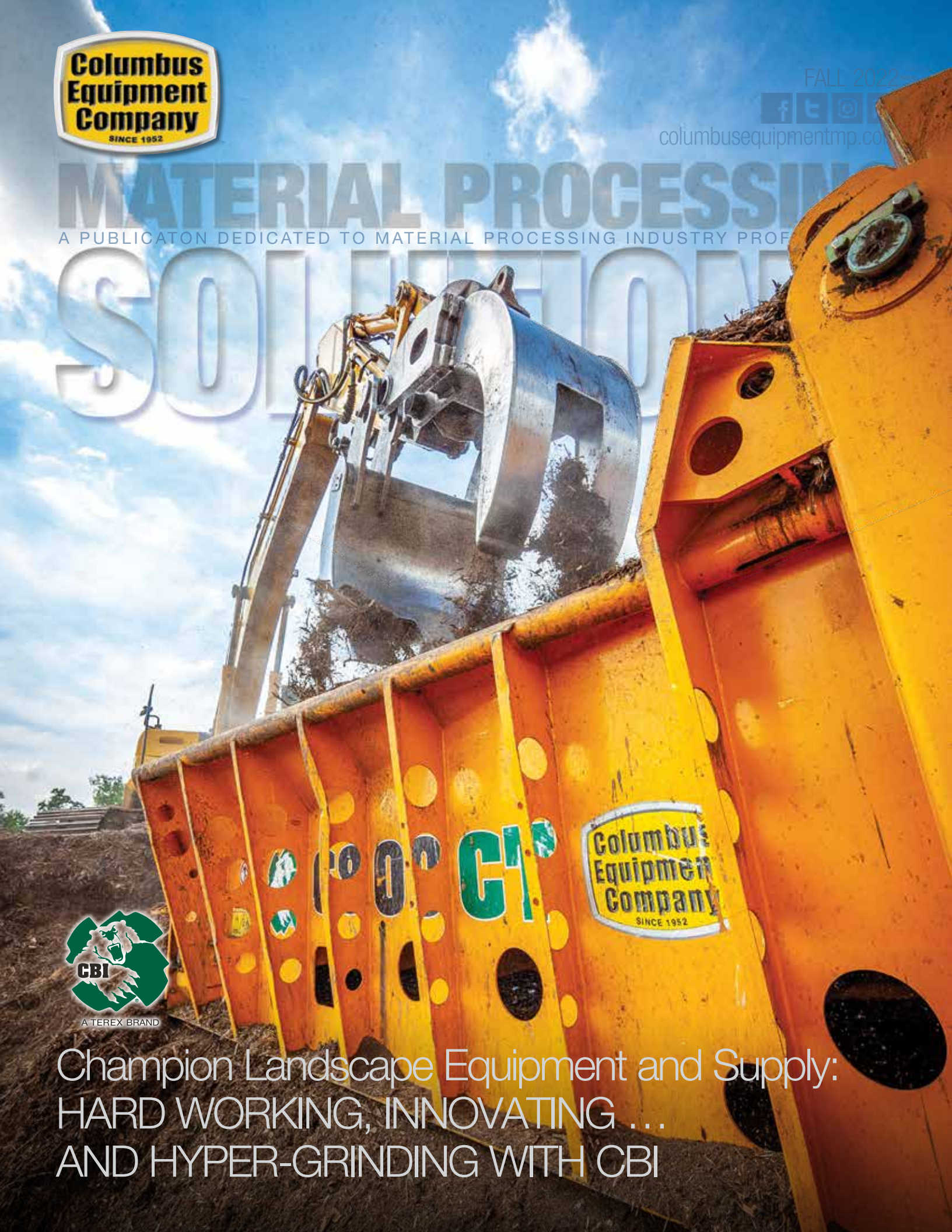


columbusequipmentmp.com

MATERIAL PROCESSING

A PUBLICATION DEDICATED TO MATERIAL PROCESSING INDUSTRY PROFESSIONALS

SOIL REHABILITATION



A TEREX BRAND

Champion Landscape Equipment and Supply:
HARD WORKING, INNOVATING ...
AND HYPER-GRINDING WITH CBI



New and Previously-Owned, Late-Model EQUIPMENT FOR SALE AND RENT



1997 Timbco 445 Feller Buncher

97 Timbco 445 Purchased new from manufacturer Serviced every 250 hrs including engine oil and filters, fuel, and hydraulic filters.

\$130,000



2002 CBI 6800CT Mobile Wood Grinder

CAT C27 Tier 4F Diesel Engine (1050 HP) PT Tech, HPT015 Hyd. Clutch, Auto Reversing Fan System, 40" X 60" Hammerhill (24 Hammer Pattern).

CALL FOR PRICE



2022 Terex TSC80T Conveyor

Deutz TD 2.9 (60HP), Large Capacity Biomass Hopper, 78' 9" Drum Centres Giving a Max Stockpile Height of 34'6" at 25 Degrees, 42" Wide 3 Ply Belt Hydraulic

\$120,000



2019 CBI Magnum Force 6400CT

CAT C27, Tier 4F Diesel Engine (1050HP) PT Tech, HPT015 Hyd. Clutch, Auto Reversing Fan System, 40" x 60" Solid Steel Segmented Rotor.

\$889,000



2022 CBI 6800CT Mobile Wood Grinder

CAT C27 Tier 4F Diesel Engine (1050 HP) PT Tech HPT015 Hyd. Clutch, Auto Reversing Fan System, 40" X 60" Hammerhill (24 Hammer Pattern).

CALL FOR PRICE



2015 CMI C250 Mulch and Mowing

Well maintained C250-FAE 200/u-225. Maintenance records and oil samples available.

\$229,000



2018 Morbark 6400XT

Cat C27 Tier 4F Diesel Engine (1,050HP), PT Tech HPT021 Hyd. Clutch, Morbark Auto Reversing Fan Sys., 42" x 61-3/8" Hammermill (30 Hammer Pattern), 40" Top Compression Feed Roll.

\$749,000



2021 Terex Ecotec Phoenix 1600T

Cat C4.4 Tier4F Diesel Engine (110HP), 5' x 16' Screen, 6.5 CU YD Hopper Capacity, Radial Conveyor W/180 Degree Swing and Variable Discharge Height.

\$234,900



2022 CMI C400L Mulch and Mowing

Cummins Tier 4F QSL9 (400 HP) 4 Pump Hydraulic System Attachment, One Piston Pump Track, Two Piston Pumps, Auxiliary Function, One Gear Pump.

CALL FOR PRICE



2021 Terex Ecotec Phoenix 3300

CAT C4.4 Tier 4F Diesel Engine (173HP), 10.2 Cubic Yard Hopper, Rear & Side Extension, 59" Feed Conveyor, 3-Ply, Variable Speed Control.

\$419,000



2020 HF 800 Log Splitter

HF 800 2-Speed Log Splitter, 1,650 lbs., 32" x 16" Cone Size, Max Split Size, Unlimited 30-60 GPM, Flow Required, 3,200-5,000 PSI Required, 7,000-70,000 lb Carrier Required Skid Steer.

\$34,000



2019 Komatsu XT465L-5, New Quadco 2900 Saw Head

Cummins 9L Tier IV (331HP) Arm 13' Straight with Tree Deflector Boom, Feller Buncher 14'10" Length Combo Bar Saw/ High Speed Disc Saw.

\$485,000

Call Mark DiSalvo at (937) 424-7678, or your local Columbus Equipment representative, for complete listing information today!







Visit columbusequipment.com/news/videos for more on Champion Landscape Equipment and Supply's CBI experience.

Champion Landscape Equipment and Supply: HARD WORKING, INNOVATING ... AND HYPER-GRINDING WITH CBI



Throughput on Champion Mulch's CBI 6800CT grinder has put the competition to shame, increasing profit margins by at least 20%. "With the 20% margin, if you're doing 180 yards an hour and now you're doing 300 yards an hour, I mean that's a huge increase," said owner Matt Brun.

Dayton-based Champion Landscape Equipment and Supply is in solid growth mode, thanks in part to owner Matt Brun's focus on producing a quality product more efficiently. Since grinding and selling mulch is a significant part of his business, he recently switched to two Terex CBI Magnum Force Horizontal Grinders to increase efficiency and speed up mulch production.

"The CBI 6800's production rate is significantly higher for the finish grind than the Morbark's. We're getting around 300 yards of finish production per hour, compared to 180 yards with the Morbark"

Matt Brun; Owner, Champion Landscape Equipment and Supply

Brun traded in a Morbark 6400XT and purchased two CBI machines—a CBI Magnum Force 6800CT Horizontal Grinder and a CBI Magnum Force 5800BT Portable Grinder—from Columbus Equipment

Company. The new equipment offers several advantages.

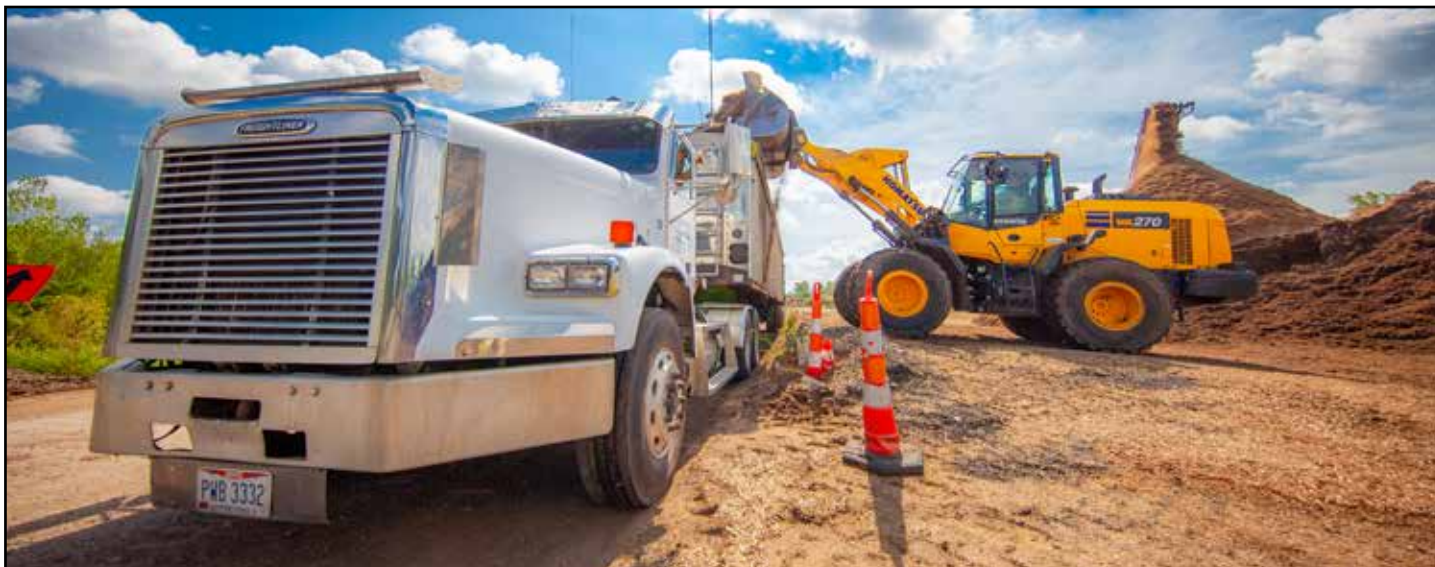
"The 6800 is the more powerful of the two machines and is great for our finish grade," Brun said. "The 6800's production rate per hour is also much higher than the Morbark 6400's even though they are both powered by the same 1,050 horsepower engine" Brun said. The 5800 is highly productive, yet it transports easily, so Champion can use it for offsite grinding. The company can also dye mulch in the 5800 rather than moving it to a separate area for dying. That boosts efficiency and relieves space issues in a tight processing yard.

"The CBI 6800's production rate is significantly higher for the finish grind than the Morbark's. We're getting around 300 yards of finish production per hour, compared to 180 yards with the Morbark," Brun said. The quality of the product is equal to what he got with his Morbark and the Petersen unit he owned before that.

"CBI grinders are an exceptionally good regrind machine," according to Jesse Garber, sales rep with Columbus Equipment Company's Material Processing Division. "It has a very heavy rotor that doesn't vary in rpm much." Design features, including tip speed and material flow through the machine, allow it to regrind much more efficiently than competitive models.

Brun noted that the CBI and Morbark use the same amount of fuel because the machines have the same

Where Profitability and Sustainability Meet™



Brun is also a fan of Komatsu wheel loaders. "They been very maintenance free for us, no warranty issues. We just feed 'em fuel, they're great machines. We've started running roll-out buckets, that's helped us efficiency-wise, as well as safety where we don't have to have ramps."

engine. "I have the same cost per hour for fuel, so I'm saving money if I'm producing more an hour."

The production story is similar with the smaller CBI. The 5800's hourly finish grind production is around 180 to 225 yards, depending on the screen. For a primary grind, production goes as high as 550 yards. "It's comparable to the Petersen 4700 I had as far as the power goes, but the production is definitely higher," Brun said.

"Garber is very helpful. He knows the industry, so it's easy to lean on him for advice."

Matt Brun; Owner, Champion Landscape Equipment and Supply

The CBI machines have other ownership advantages, too. The serviceability of the CBI machines is easier, with better access to daily maintenance and grease points. The new CBI machines also have a metal detection system to prevent unwanted objects from entering the mill and damaging it, a feature Brun didn't have on previous grinders.

Champion Mulch produces 11 types of mulch and sells about 200,000 yards of mulch and compost a year, including bulk and bagged products. With three retail outlets and three production yards, the company aims to be a one-stop shop for landscapers and municipalities, Brun said. Champion also sells decorative stones, gravel, aggregate, paver stones, blocks, STIHL power equipment, and commercial

and residential mowers. In the winter, it offers salt spreaders, snowplows, road salt and ice melt.

Brun started the business in 2012, focusing on winter needs as a sole supplier for Morton salt. After recognizing that the customer base for mulch was identical to the one for road salt, he began brokering mulch from a local producer. When the company's owner retired in 2017, Brun bought him out and entered the mulch production business.

Brun has relied on expertise from Columbus Equipment Company as he's grown his business. "Garber is very helpful," Brun said. "He knows the industry, so it's easy to lean on him for advice."

Brun also runs Komatsu equipment, so he counts on Columbus Equipment Company for expertise beyond grinders. "Columbus Equipment Company as a whole has sped up my learning curve," Brun said, naming Mike Early from the Dayton branch. "The service guys from Columbus Equipment are great. They know that downtime is an issue for us, and they work a lot of long hours," he added.

Champion Landscape Equipment and Supply has been growing at 20% to 30% annually for several years. Brun has expanded from Dayton into the Cincinnati market, where he's adding a second location. He credits the growth to many factors, including serving growing markets, selling quality products, and prioritizing efficiency. "We try to think outside the box. The old way isn't the answer. We want to be innovative," he added.

Columbus Equipment Company is Brun's partner of choice when seeking innovative equipment solutions like highly-productive, state-of-the-art CBI grinders.



THE PAUL BUNYAN SHOW

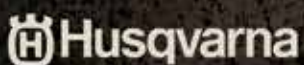
The Original American Forestry Show



888-38-TREES | OHIOFOREST.ORG

OCTOBER 7-9, 2022

GUERNSEY CO. FAIRGROUNDS | CAMBRIDGE, OHIO



INSPIRED BY TRADITION. POWERED BY INNOVATION.
THE OHIO FORESTRY ASSOCIATION





MATERIAL PROCESSING

© 2022 Mediaworks Marketing, Inc.

AUTUMN SERVICE SPECIAL

FREE MACHINE INSPECTION!

WITH PURCHASE OF 24 TEREX CBI OEM TEETH

2" SHORT FANG P/N:40410499	\$51.25/per	\$1,230/24
3" SHORT FANG P/N:40410497	\$60.00/per	\$1,440/24
3" LONG FANG P/N:40410448	\$ 87.50/per	\$2,100/24

FOR PERFORMANCE, PRODUCTIVITY,
DEPENDABILITY, CALL (614) 563-6030!

Front-to-rear, top-to-bottom inspection includes all higher wear items—bearings, belts, teeth, screens—and check for any leaks.

All CBI models included
No mileage restrictions
Expiration: November 15, 2022

**Standard labor rate is \$150/hour at \$3.75/mile*



COLUMBUS
(614) 443-6541

TOLEDO
(419) 872-7101

CINCINNATI
(513) 771-3922

RICHFIELD
(330) 659-6681

CADIZ
(740) 942-8871

DAYTON
(937) 879-3154

MASSILLON
(330) 833-2420

ZANESVILLE
(740) 455-4036

PIKETON
(740) 289-3757

Return Address: 2323 Performance Way, Columbus, OH 43207



www.columbusequipmentmp.com